

FABRIC REQUIREMENTS



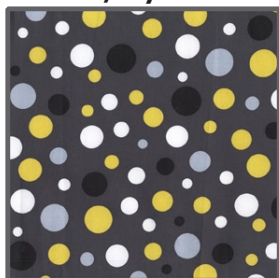
CX3670 Black Owl By Myself
7/8 yard



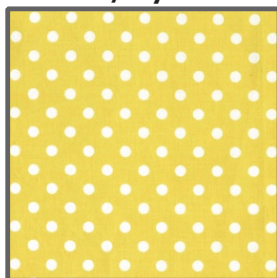
CX4061 Citron Zoology
3/8 yard



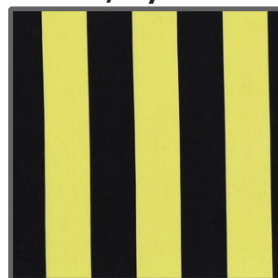
CX2897 Gray Groovy Guitars
3/8 yard



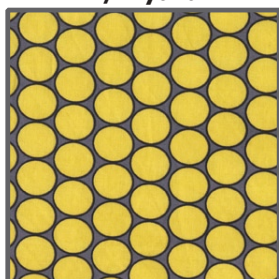
CX3295 Gray Lolli Dot
1/2 yard



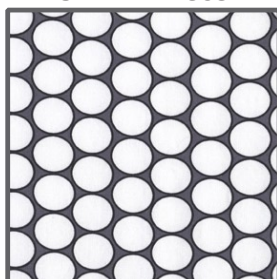
CX2490 Citron Dumb Dot
5" x 7" Piece



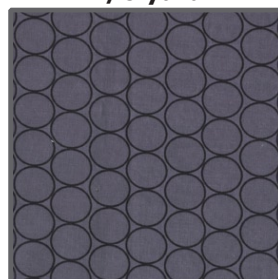
CX3745 Kiwi Two By Two Stripe
1/6 yard



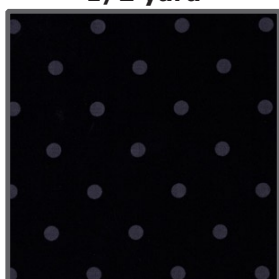
CX3755 Citron Huevos
1/2 yard



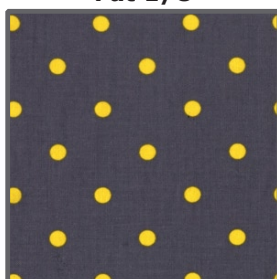
CX3755 Gray Huevos
Fat 1/8



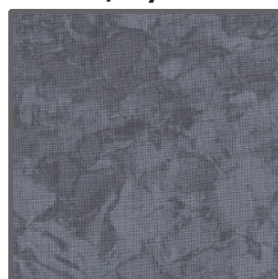
CX3755 Stone Huevos
3/8 yard



DC4155 Black Mints
7/8 yard



DC4155 Gray Mints
1/6 yard



K1083 Krystal
Fat 1/4



Jet Black
3/4 yard

Backing and Batting 54" x 54"

13 Owls



Size: Approximately 49" Square

Quilt designed by Marinda Stewart
Skill Level: Confident Beginner



118 West 22nd Street 5th Floor New York, NY 10011
Tel: 212.704.0774 Fax: 212. 633. 0272 email: info@michaelmillerfabrics.com

www.michaelmillerfabrics.com

"13 Owls"

Quilt by Marinda Stewart

Size: Approximately 49" Square - Skill Level: Confident Beginner

Materials

Fabric	Yardage	Cutting
CX3670 Black Owl By Myself	7/8 yard	Fussy cut (12) 5 1/2" squares
CX3755 Citron Huevos	1/2 yard	Cut (24) 1 1/2" x 5 1/2" Cut (24) 1 1/2" x 7 1/2"
CX3755 Gray Huevos	Fat 1/8	Cut (12) 1 1/2" squares
DC4155 Gray Mints	1/6 yard	Cut (24) 1 1/2" squares Cut (24) 1 1/2" x 3 1/2"
CX4061 Citron Zoology	3/8 yard	Cut (24) 1 1/2" x 3 1/2" Cut (24) 1 1/2" x 5 1/2"
CX3295 Gray Lolli Dot	1/2 yard	Cut (24) 1 1/2" x 5 1/2" Cut (24) 1 1/2" x 7 1/2"
DC4155 Black Mints	7/8 yard	Cut (1) 30 1/2" square
CX3745 Kiwi Two By Two Stripe	1/6 yard	Cut (2) 1" x 30 1/2" Cut (2) 1" x 31 1/2"
* CX2897 Gray Groovy Guitars	3/8 yard	Cut (2) 2 1/2" x 31 1/2" Cut (2) 2 1/2" x 35 1/2"
CX3755 Stone Huevos	3/8 yard	Owl (see pattern)
Jet Black	3/4 yard	Cut (5) 2 1/2" x W.O.F. - binding Cut (2) 3" x W.O.F. prairie points Owl eyes (see pattern)
K1083 Krystal	Fat 1/4	Branch (see pattern)
CX2490 Citron Dumb Dot	5" x 7" piece	Owl eyes, beak, claws
* One way design - Cut pieces vertically		
Also Needed: 54" x 54" Backing, 54" x 54" Batting, Threads to match, Fusible Web, Straight Pins, Scissors, Acrylic Ruler, Rotary Cutter, and Mat.		

Disclaimers

This pattern is provided as a courtesy to quilt stores, catalogs, and quilters. Michael Miller Fabrics, LLC is not responsible for the accuracy of any kits packaged to accompany this pattern. Please direct any inquiries to the kit maker.

Yardage requirements for this pattern may allow for excess yardage to accommodate specific placement of motifs or to allow for any fussy-cutting to achieve the finished quilt design.

While every attempt has been made to give accurate measurements, yardage requirements, and construction directions; this does not allow personal variations in measuring, cutting, and or sewing. The enclosed directions were used in the construction of the original quilt.

Directions

- Trace pattern pieces onto the paper side of the fusible web. Reverse the branch so it faces correctly on the quilt. Rough cut out. Iron owl onto CX3755-stone, eyes, beak, claws onto CX2490, branch onto K1083, eye (large) onto Jet Black. Cut out. Iron pieces onto DC4155 Black 30 1/2" square centering the owl and the branch as shown. Machine satin stitch pieces in place with matching thread.

- For continuous prairie point strip, fold Jet Black 3" strip in half lengthwise. Finger press the seam. Open the strip, fold each raw edge side in to meet the center fold line. Firmly press in place. Mark and cut strip every 3" to within a shallow 1/8" on the opposite fold. Fold the top edges

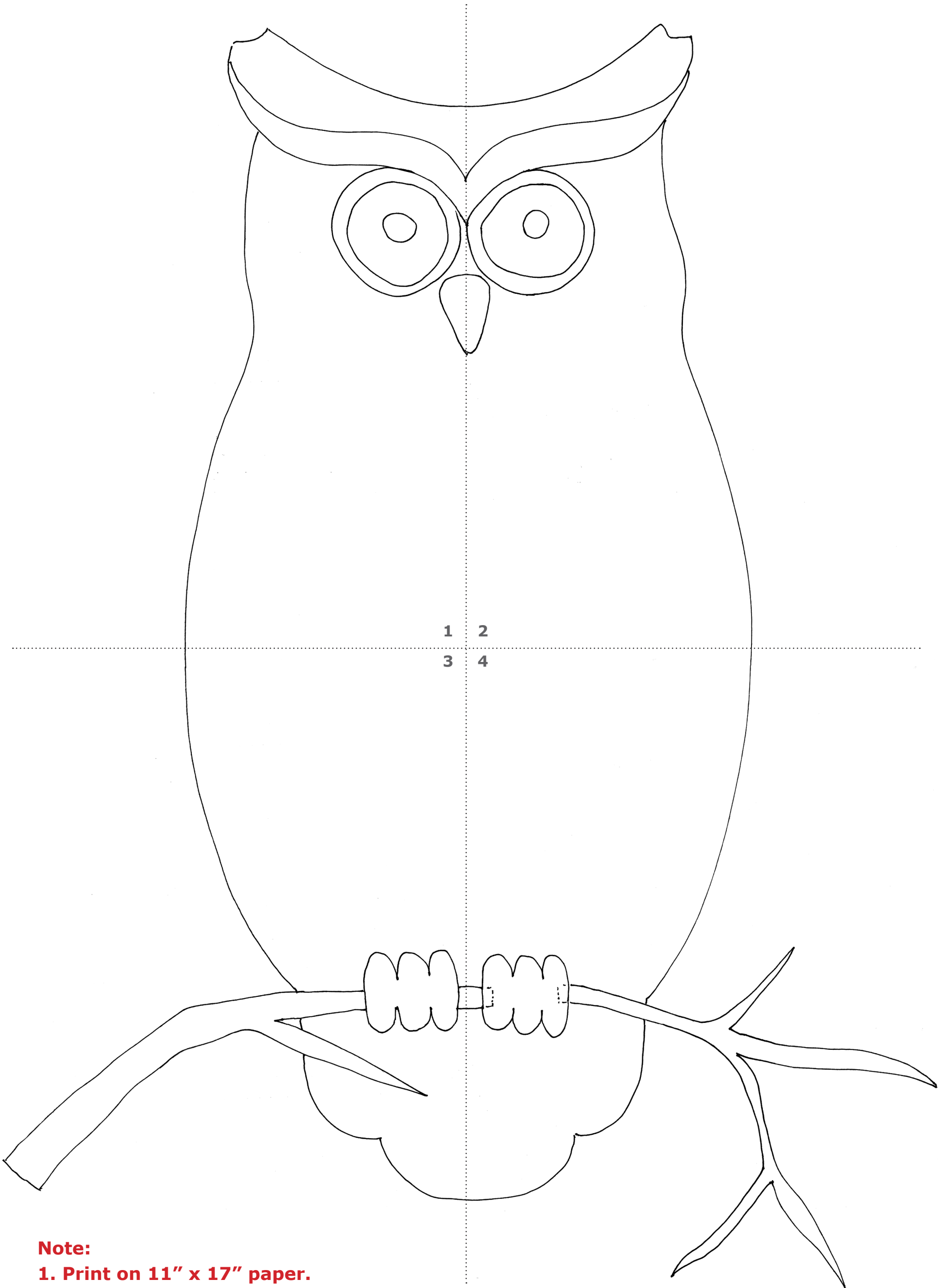


into the center on each 3" cut to make a prairie point. Continue for the complete width of fabric. Press firmly. Topstitch 1/8" from the continuous fold edge to secure the edges. Cut one 4 point piece and (4) 5-point pieces. Arrange on the owl body as shown. Topstitch in place 1/8" from the edge. Overstitch with a very wide (5.0 or larger) satin stitch to cover all the raw edges.

- Sew CX3745 30 1/2" pieces to the top and bottom of the quilt. Sew CX3745 31 1/2" pieces to each side.
- Sew CX2897 31 1/2" strips to the top and bottom of the quilt. Sew CX2897 35 1/2" strips to each side. Set aside.
- For the owl blocks - sew CX3755 Citron 5 1/2" strip to the top and bottom of one CX3670 5 1/2" square. Sew CX3755 Citron 7 1/2" strip to each side of the block. Make 12 blocks total. Set aside.

6. For the log cabin blocks - sew one DC4155 Gray 1 1/2" square to the top and bottom of one CX3755 Gray 1 1/2" square. Sew one CX4061 3 1/2" strip to the top and bottom of the block. Sew one CX4061 5 1/2" strip each side. Sew one CX3295 5 1/2" strip to the top and bottom. Sew one CX3295 7 1/2" strip to each side to complete one 7 1/2" block. Make (12) total.
7. Begin and end with a log cabin block and sew (3) "log cabin" and (2) "owl" blocks together in a horizontal row. Make two. Sew to the top and bottom of the quilt. Make (2) vertical rows beginning and ending with an "owl" block. Use (4) "owls" and (3) "log cabins" as shown. Sew one row to each side of the quilt.
8. Layer backing, batting, and quilt top. Baste.
9. Quilt as desired. Be careful to leave prairie points loose.
10. Piece Jet Black 2 1/2" strips together for binding.
Bind edges to finish.

13 Owls Pattern



Note:

- 1. Print on 11" x 17" paper.
- 2. Cut into quarters.
- 3. Enlarge each corner on Copier 200% to get size.

* Mbrinda © 2009